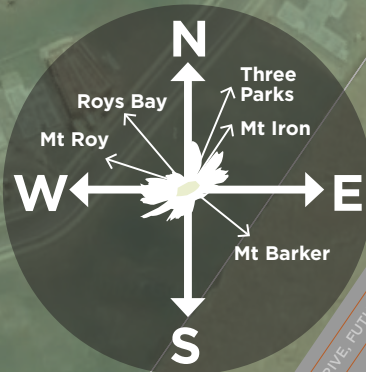




# ALPINE MEADOWS

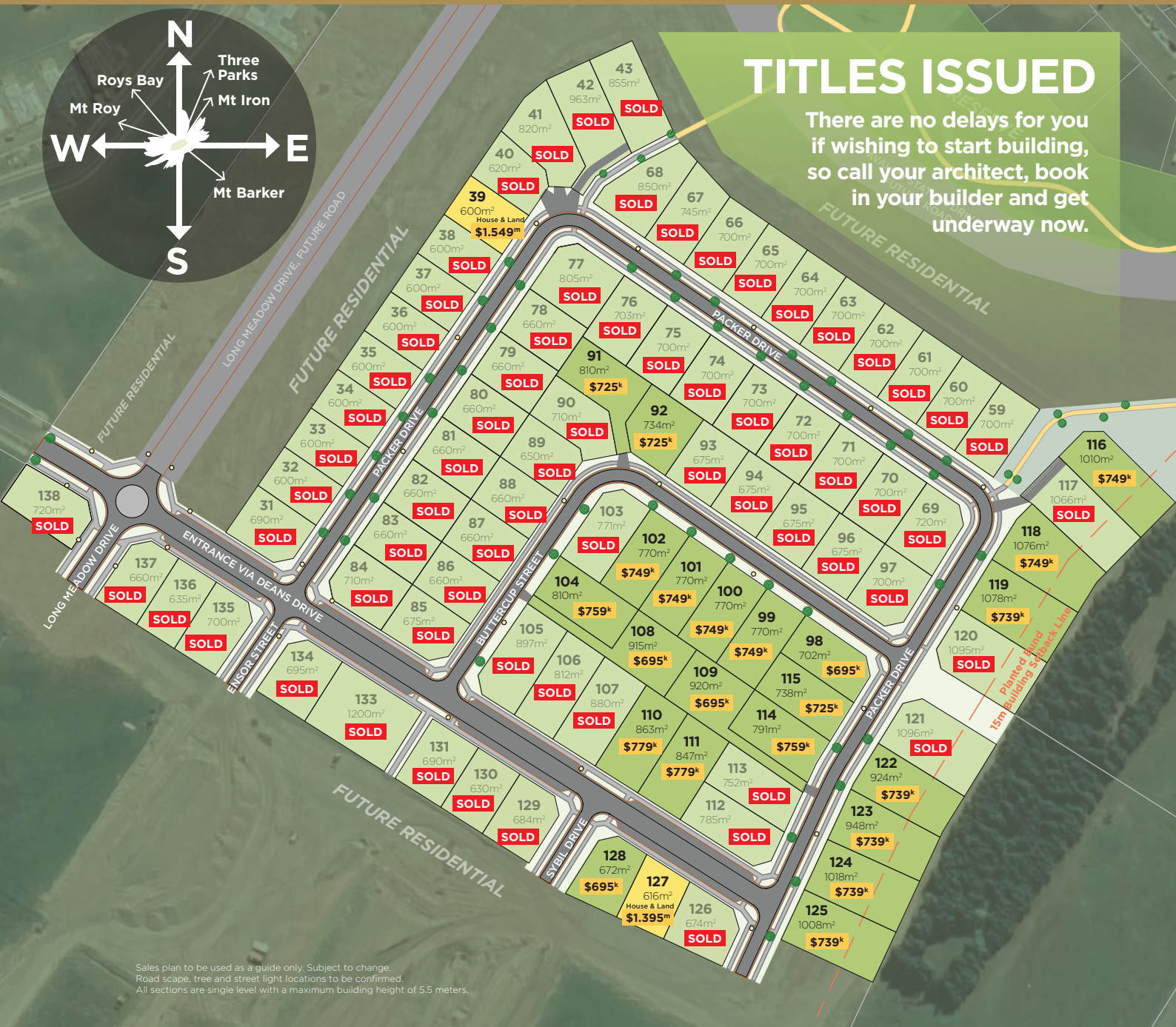
LAKE WANAKA

## Fantastic Wanaka Sections For Sale



### TITLES ISSUED

There are no delays for you if wishing to start building, so call your architect, book in your builder and get underway now.



Sales plan to be used as a guide only. Subject to change. Road scape, tree and street light locations to be confirmed. All sections are single level with a maximum building height of 5.5 meters.

Secure your slice of paradise today, contact:

**WILLOWRIDGE**  
DEVELOPMENTS LTD

A joint venture project with  
**ORCHARD ROAD**  
HOLDINGS LIMITED



**Jarrod Frazer**  
Residential Sales & Marketing Manager  
**027 251 2007**  
jarrod@willowridge.co.nz

www.willowridge.co.nz | www.alpinemeadows.nz

LOT 39



Grass has been digitally added while the grass seed grows.



# Modern Living

17 Packer Road, Wanaka

**\$1,549,000**

193m<sup>2</sup> house / 600m<sup>2</sup> land  
(more or less)

- 3 
- 2 
- 2 

**Welcome to your brand-new retreat — a modern, mono-pitched home set on an easy-care section in stunning Wanaka.**

Peaceful living with exceptional modern style. Custom-designed kitchen, open-plan living and dining area. This sun-filled space extends through to the covered alfresco area and hardwood deck, offering year-round indoor-outdoor enjoyment. You'll stay super warm through the winters with a heat pump and log burner. The master suite basks in morning sunlight, features a walk-in wardrobe and a ensuite. Every detail has been considered, from the large, well-planned storage cupboards, to the convenience of a separate laundry and guest toilet. The double garage provides secure internal access, and the additional off-street parking is perfectly suited for a boat. Outside, the landscaped grounds are low-maintenance and easy-care, with an automated irrigation system. This is modern Wanaka living at its very best — stylish, warm, functional, and ready for you to move in.

LOT 127



# Your Brand New Beginning

50 Deans Drive, Wanaka

**\$1,395,000**

165m<sup>2</sup> house / 616m<sup>2</sup> land  
(more or less)

- 3 
- 2 
- 2 

**Welcome to your dream home, Holiday home or investment, nestled in the tranquil Alpine Meadows in Wanaka, where modern comfort meets natural beauty.**

This brand-new, easy-care home features an open-concept living area with vaulted ceilings — creating the perfect space for relaxation and entertainment. Step inside, and you'll be greeted by natural light flooding the living spaces, with gorgeous mountain views to enjoy from every angle. Relaxing in your covered courtyard, alfresco living has never been more inviting.

Fully landscaped complete with a automated irrigation system for easy maintenance.



**ALPINE MEADOWS**  
LAKE WANAKA

Properties located at Alpine Meadows.  
[www.alpinemeadows.nz](http://www.alpinemeadows.nz)

**WILLOWRIDGE**  
DEVELOPMENTS LTD

Viewing by  
appointment,  
contact:



**Jarrod Frazer**

Residential Sales & Marketing Manager

**027 251 2007**

[jarrod@willowridge.co.nz](mailto:jarrod@willowridge.co.nz)