



Title Plan - LT 608359

Survey Number LT 608359
Surveyor Reference W5620 Alpine Meadows - Stage 1
Surveyor Brady James Kingan
Survey Firm Paterson Pitts Limited Partnership (Wanaka)
Surveyor Declaration I Brady James Kingan, being a licensed cadastral surveyor, certify that--
(a) this dataset provided by me and its related survey are accurate, correct and in accordance with the Cadastral Survey Act 2002 and Cadastral Survey Rules 2021; and
(b) the survey was undertaken by me or under my personal direction.
Declared on 19 Feb 2025 03:32 PM

Survey Details

Dataset Description Lots 31-43, 59-138 and 900-905 being a subdivision of Lot 999 DP 535926
Status Approved as to Survey
Land District Otago **Survey Class** Class A
Submitted Date 19/02/2025 **Survey Approval Date** 03/03/2025
Deposit Date

Territorial Authorities

Queenstown-Lakes District

Comprised In

RT 888102

Created Parcels

Parcels	Parcel Intent	Area	RT Reference
Area K Deposited Plan 608359	Easement		
Lot 31 Deposited Plan 608359	Fee Simple Title	0.0691 Ha	Multiple
Lot 32 Deposited Plan 608359	Fee Simple Title	0.0600 Ha	1204441
Lot 33 Deposited Plan 608359	Fee Simple Title	0.0600 Ha	1204442
Lot 34 Deposited Plan 608359	Fee Simple Title	0.0600 Ha	1204443
Lot 35 Deposited Plan 608359	Fee Simple Title	0.0600 Ha	1204444
Lot 36 Deposited Plan 608359	Fee Simple Title	0.0600 Ha	1204445
Lot 37 Deposited Plan 608359	Fee Simple Title	0.0600 Ha	1204446
Lot 38 Deposited Plan 608359	Fee Simple Title	0.0600 Ha	1204447
Lot 39 Deposited Plan 608359	Fee Simple Title	0.0600 Ha	1204448
Lot 40 Deposited Plan 608359	Fee Simple Title	0.0624 Ha	1204449
Lot 41 Deposited Plan 608359	Fee Simple Title	0.0825 Ha	1204450
Lot 42 Deposited Plan 608359	Fee Simple Title	0.0963 Ha	1204451
Lot 43 Deposited Plan 608359	Fee Simple Title	0.0859 Ha	1204452
Lot 59 Deposited Plan 608359	Fee Simple Title	0.0700 Ha	1204453
Lot 60 Deposited Plan 608359	Fee Simple Title	0.0700 Ha	1204454
Lot 61 Deposited Plan 608359	Fee Simple Title	0.0700 Ha	1204455
Lot 62 Deposited Plan 608359	Fee Simple Title	0.0700 Ha	1204456
Lot 63 Deposited Plan 608359	Fee Simple Title	0.0700 Ha	1204457
Lot 64 Deposited Plan 608359	Fee Simple Title	0.0700 Ha	1204458

Title Plan - LT 608359

Created Parcels

Parcels	Parcel Intent	Area	RT Reference
Lot 65 Deposited Plan 608359	Fee Simple Title	0.0700 Ha	1204459
Lot 66 Deposited Plan 608359	Fee Simple Title	0.0700 Ha	1204460
Lot 67 Deposited Plan 608359	Fee Simple Title	0.0745 Ha	1204461
Lot 68 Deposited Plan 608359	Fee Simple Title	0.0850 Ha	1204462
Lot 69 Deposited Plan 608359	Fee Simple Title	0.0721 Ha	1204463
Lot 70 Deposited Plan 608359	Fee Simple Title	0.0702 Ha	1204464
Lot 71 Deposited Plan 608359	Fee Simple Title	0.0702 Ha	1204465
Lot 72 Deposited Plan 608359	Fee Simple Title	0.0702 Ha	1204466
Lot 73 Deposited Plan 608359	Fee Simple Title	0.0702 Ha	1204467
Lot 74 Deposited Plan 608359	Fee Simple Title	0.0702 Ha	1204468
Lot 75 Deposited Plan 608359	Fee Simple Title	0.0702 Ha	1204469
Lot 76 Deposited Plan 608359	Fee Simple Title	0.0703 Ha	1204470
Lot 77 Deposited Plan 608359	Fee Simple Title	0.0807 Ha	1204471
Lot 78 Deposited Plan 608359	Fee Simple Title	0.0660 Ha	1204472
Lot 79 Deposited Plan 608359	Fee Simple Title	0.0660 Ha	1204473
Lot 80 Deposited Plan 608359	Fee Simple Title	0.0660 Ha	1204474
Lot 81 Deposited Plan 608359	Fee Simple Title	0.0660 Ha	1204475
Lot 82 Deposited Plan 608359	Fee Simple Title	0.0660 Ha	1204476
Lot 83 Deposited Plan 608359	Fee Simple Title	0.0660 Ha	1204477
Lot 84 Deposited Plan 608359	Fee Simple Title	0.0712 Ha	1204478
Lot 85 Deposited Plan 608359	Fee Simple Title	0.0678 Ha	1204479
Lot 86 Deposited Plan 608359	Fee Simple Title	0.0660 Ha	1204480
Lot 87 Deposited Plan 608359	Fee Simple Title	0.0660 Ha	1204481
Lot 88 Deposited Plan 608359	Fee Simple Title	0.0660 Ha	1204482
Lot 89 Deposited Plan 608359	Fee Simple Title	0.0653 Ha	1204483
Lot 90 Deposited Plan 608359	Fee Simple Title	0.0714 Ha	1204484
Lot 91 Deposited Plan 608359	Fee Simple Title	0.0810 Ha	1204485
Lot 92 Deposited Plan 608359	Fee Simple Title	0.0734 Ha	1204486
Lot 93 Deposited Plan 608359	Fee Simple Title	0.0678 Ha	1204487
Lot 94 Deposited Plan 608359	Fee Simple Title	0.0678 Ha	1204488
Lot 95 Deposited Plan 608359	Fee Simple Title	0.0678 Ha	1204489
Lot 96 Deposited Plan 608359	Fee Simple Title	0.0679 Ha	1204490
Lot 97 Deposited Plan 608359	Fee Simple Title	0.0705 Ha	1204491
Lot 98 Deposited Plan 608359	Fee Simple Title	0.0702 Ha	1204492
Lot 99 Deposited Plan 608359	Fee Simple Title	0.0770 Ha	1204493
Lot 100 Deposited Plan 608359	Fee Simple Title	0.0770 Ha	1204494
Lot 101 Deposited Plan 608359	Fee Simple Title	0.0770 Ha	1204495
Lot 102 Deposited Plan 608359	Fee Simple Title	0.0770 Ha	1204496
Lot 103 Deposited Plan 608359	Fee Simple Title	0.0771 Ha	1204497
Lot 104 Deposited Plan 608359	Fee Simple Title	0.0810 Ha	1204498
Lot 105 Deposited Plan 608359	Fee Simple Title	0.0897 Ha	1204499
Lot 106 Deposited Plan 608359	Fee Simple Title	0.0812 Ha	1204500
Lot 107 Deposited Plan 608359	Fee Simple Title	0.0880 Ha	1204501
Lot 108 Deposited Plan 608359	Fee Simple Title	0.0917 Ha	1204502

Title Plan - LT 608359

Created Parcels

Parcels	Parcel Intent	Area	RT Reference
Lot 109 Deposited Plan 608359	Fee Simple Title	0.0920 Ha	1204503
Lot 110 Deposited Plan 608359	Fee Simple Title	0.0863 Ha	1204504
Lot 111 Deposited Plan 608359	Fee Simple Title	0.0847 Ha	1204505
Lot 112 Deposited Plan 608359	Fee Simple Title	0.0785 Ha	1204506
Lot 113 Deposited Plan 608359	Fee Simple Title	0.0752 Ha	1204507
Lot 114 Deposited Plan 608359	Fee Simple Title	0.0791 Ha	1204508
Lot 115 Deposited Plan 608359	Fee Simple Title	0.0738 Ha	1204509
Lot 116 Deposited Plan 608359	Fee Simple Title	0.1010 Ha	1204510
Lot 117 Deposited Plan 608359	Fee Simple Title	0.1066 Ha	1204511
Lot 118 Deposited Plan 608359	Fee Simple Title	0.1076 Ha	1204512
Lot 119 Deposited Plan 608359	Fee Simple Title	0.1078 Ha	1204513
Lot 120 Deposited Plan 608359	Fee Simple Title	0.1095 Ha	1204514
Lot 121 Deposited Plan 608359	Fee Simple Title	0.1096 Ha	1204515
Lot 122 Deposited Plan 608359	Fee Simple Title	0.0924 Ha	1204516
Lot 123 Deposited Plan 608359	Fee Simple Title	0.0948 Ha	1204517
Lot 124 Deposited Plan 608359	Fee Simple Title	0.1018 Ha	1204518
Lot 125 Deposited Plan 608359	Fee Simple Title	0.1008 Ha	1204519
Lot 126 Deposited Plan 608359	Fee Simple Title	0.0674 Ha	1204520
Lot 127 Deposited Plan 608359	Fee Simple Title	0.0616 Ha	1204521
Lot 128 Deposited Plan 608359	Fee Simple Title	0.0672 Ha	1204522
Lot 129 Deposited Plan 608359	Fee Simple Title	0.0684 Ha	1204523
Lot 130 Deposited Plan 608359	Fee Simple Title	0.0630 Ha	1204524
Lot 131 Deposited Plan 608359	Fee Simple Title	0.0690 Ha	1204525
Lot 132 Deposited Plan 608359	Vesting on Deposit for Local Purpose Reserve	2.2199 Ha	1224433
Lot 133 Deposited Plan 608359	Fee Simple Title	0.1200 Ha	1204526
Lot 134 Deposited Plan 608359	Fee Simple Title	0.0698 Ha	1204527
Lot 135 Deposited Plan 608359	Fee Simple Title	0.0701 Ha	1204528
Lot 136 Deposited Plan 608359	Fee Simple Title	0.0637 Ha	1204529
Lot 137 Deposited Plan 608359	Fee Simple Title	0.0662 Ha	1204530
Lot 138 Deposited Plan 608359	Fee Simple Title	0.0720 Ha	1204531
Lot 900 Deposited Plan 608359	Vesting on Deposit for Road	2.5017 Ha	
Lot 901 Deposited Plan 608359	Vesting on Deposit for Local Purpose Reserve	0.0262 Ha	1210357
Lot 902 Deposited Plan 608359	Vesting on Deposit for Local Purpose Reserve	0.2894 Ha	1224443
Lot 903 Deposited Plan 608359	Fee Simple Title	6.2123 Ha	1204532
Lot 904 Deposited Plan 608359	Fee Simple Title	23.9404 Ha	1204532
Lot 905 Deposited Plan 608359	Vesting on Deposit for Local Purpose Reserve	0.0680 Ha	1210358
Area A Deposited Plan 608359	Easement		
Area B Deposited Plan 608359	Easement		
Area C Deposited Plan 608359	Easement		



Title Plan - LT 608359

Created Parcels

Parcels	Parcel Intent	Area	RT Reference
Area D Deposited Plan 608359	Easement		
Area E Deposited Plan 608359	Easement		
Area F Deposited Plan 608359	Easement		
Area G Deposited Plan 608359	Easement		
Area H Deposited Plan 608359	Easement		
Area I Deposited Plan 608359	Easement		
Area J Deposited Plan 608359	Easement		
Total Area		42.2106 Ha	

PATERSONPITTS

Land Registration District

Otago

Plan Number

DP 608359

Territorial Authority

Queenstown Lakes District Council

Job Number

W5620 Alpine Meadows – Stage 1

MEMORANDUM OF EASEMENTS			
PURPOSE	SHOWN	SERVIENT TENEMENT (BURDENED LAND)	DOMINANT TENEMENT (BENEFITED LAND)
Right of way, right to convey water, right to convey electricity, right to convey telecommunications	F	Lot 42	Lot 43
Right of way, right to drain sewage, right to convey water, right to convey electricity, right to convey telecommunications	H	Lot 117	Lot 116

MEMORANDUM OF EASEMENTS IN GROSS			
PURPOSE	SHOWN	SERVIENT TENEMENT (BURDENED LAND)	GRANTEE
Right to drain water	F	Lot 42	Queenstown Lakes District Council
	H	Lot 117	
	K	Lot 116	
	B & C	Lot 903	
Right to drain sewage, right to convey water	G		
Right of way (pedestrian)	G, I & D		
Right to convey electricity	F	Lot 42	Aurora Energy Limited
	H	Lot 117	
	A	Lot 901	
	E, G	Lot 903	
	J	Lot 905	
Right to convey telecommunications	F	Lot 42	Chorus New Zealand Limited
	H	Lot 117	
	J	Lot 905	

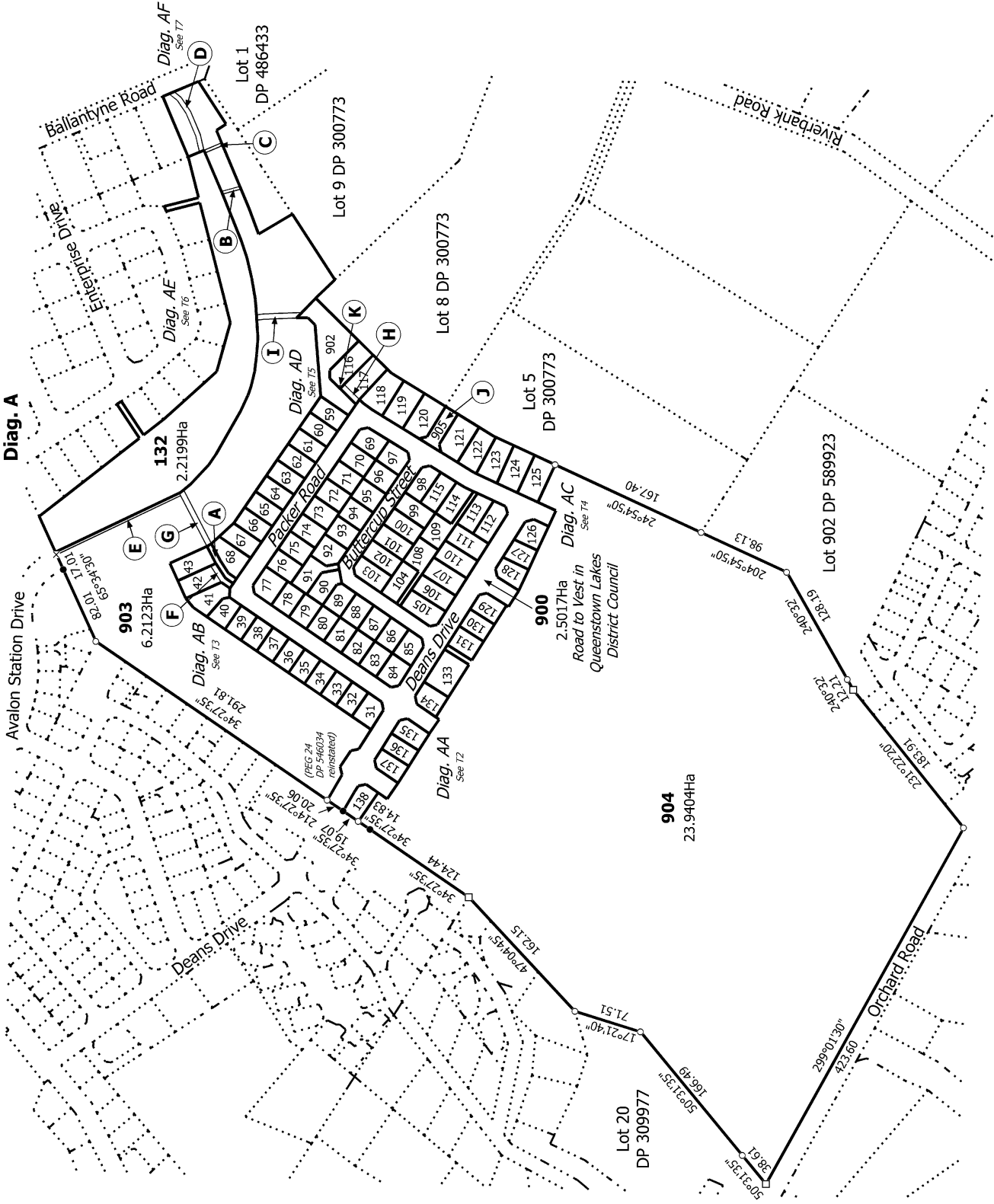
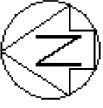
SCHEDULE OF EXISTING EASEMENTS TO BE SURRENDERED			
PURPOSE	SHOWN	SERVIENT TENEMENT (BURDENED LAND)	CREATED BY
Right to drain water (in gross)	B, C, D, L, M, N & O on DP 535926	Lot 999 DP 535926	E.I 11616056.6
Right of way (pedestrian)	B, D, K, M, P, Q & R on DP 535926		

AMALGAMATION CONDITION
That Lots 903 and 904 hereon be held in the same record of title (CSN Request 1670309).

EXISTING LAND COVENANTS
Lot 999 DP 535926 enjoys the benefit of Land Covenant in Covenant Instrument 11779332.8 and is not burdened by it.

EXISTING CONSENT NOTICES
The existing consent notice 11616056.5 registered on record of title 888102 is to be partially cancelled in so far as it relates to Lot 999 DP 535926 only, pursuant to section 221(3) of the RMA 1991.
The existing consent notice 8916309.3 registered on record of title 888102 only affects former Lot 99 DP 445766. This is to remain and drop down onto the new titles for Lots 132 & 903 hereon only.

NEW CONSENT NOTICE
A new consent notice is to be registered on the new titles of the relevant allotments.



T 1/7

Land District: Otago

Digitally Generated Plan
Generated on: 03/03/2025 5:31pm Page 7 of 13

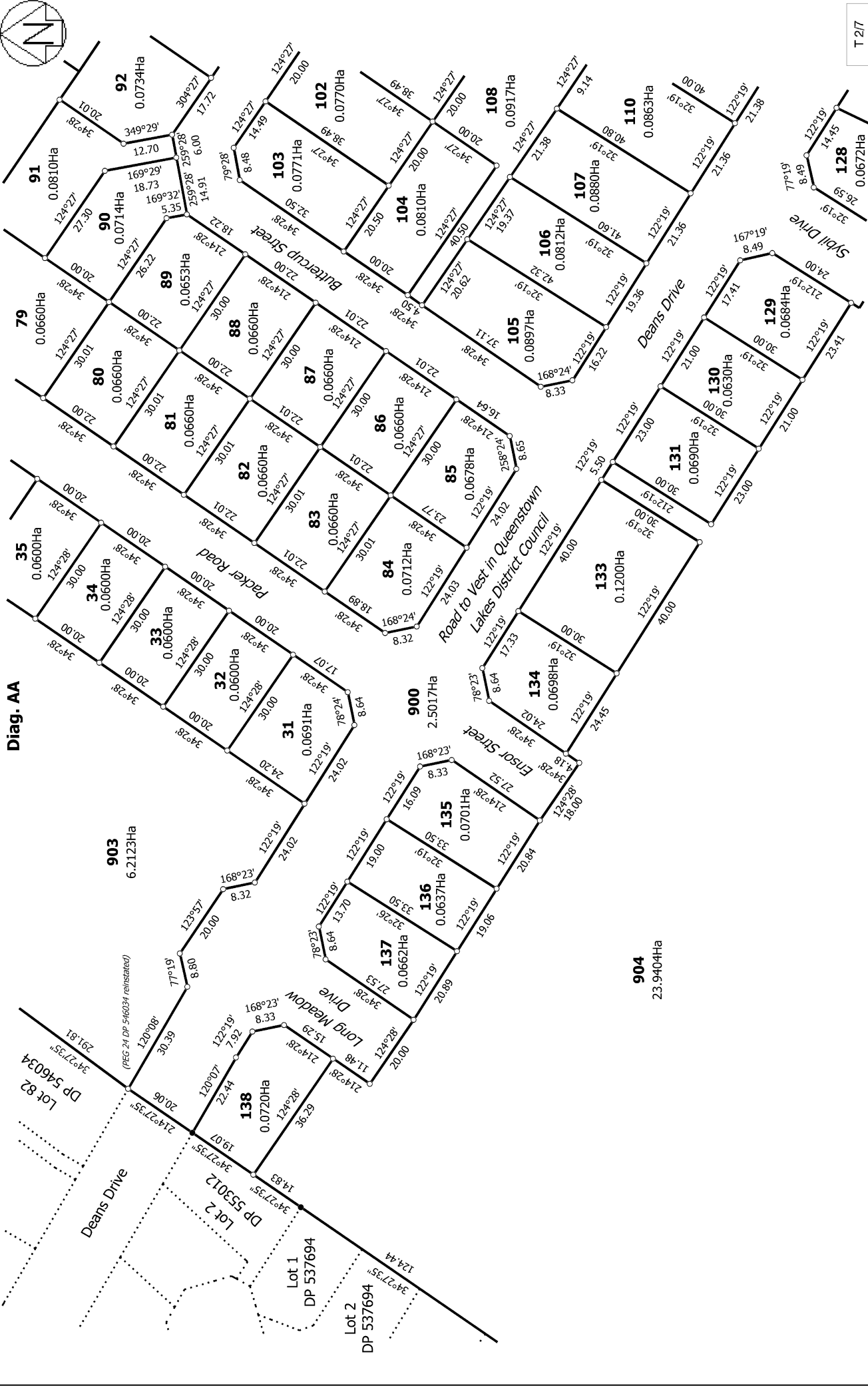
Lots 31-43, 59-138 and 900-905 being a subdivision of Lot 999 DP 535926

Surveyor: Brady James Kingan
Firm: Paterson Pitts Limited Partnership (W)

Title Plan
LT 608359
Approved on: 3/03/2025



Diag. AA



T 217

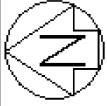
Land District: Otago

Digitally Generated Plan
Generated on: 03/03/2025 5:31pm Page 8 of 13

Lots 31-43, 59-138 and 900-905 being a subdivision of Lot 999 DP 535926

Surveyor: Brady James Kingan
Firm: Paterson Pitts Limited Partnership (W)

Title Plan
LT 608359
Approved on: 3/03/2025

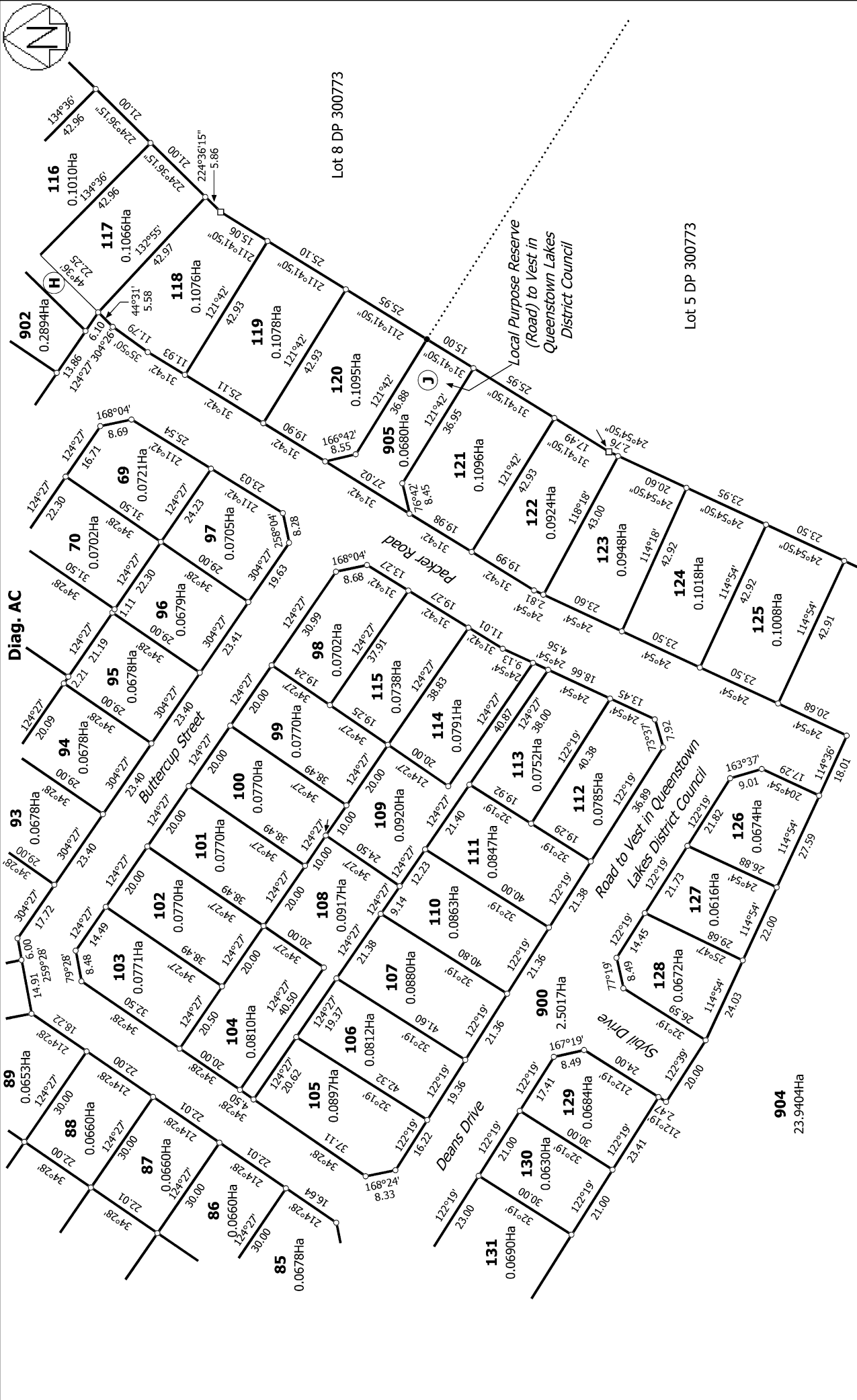
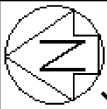


Diag. AB



T 3/7

<p>Land District: Otago</p> <p>Digitally Generated Plan Generated on: 03/03/2025 5:31pm Page 9 of 13</p>	<p>Lots 31-43, 59-138 and 900-905 being a subdivision of Lot 999 DP 535926</p>	<p>Surveyor: Brady James Kingan Firm: Paterson Pitts Limited Partnership (M)</p>	<p>Title Plan LT 608359 Approved on: 3/03/2025</p>
---	---	--	--

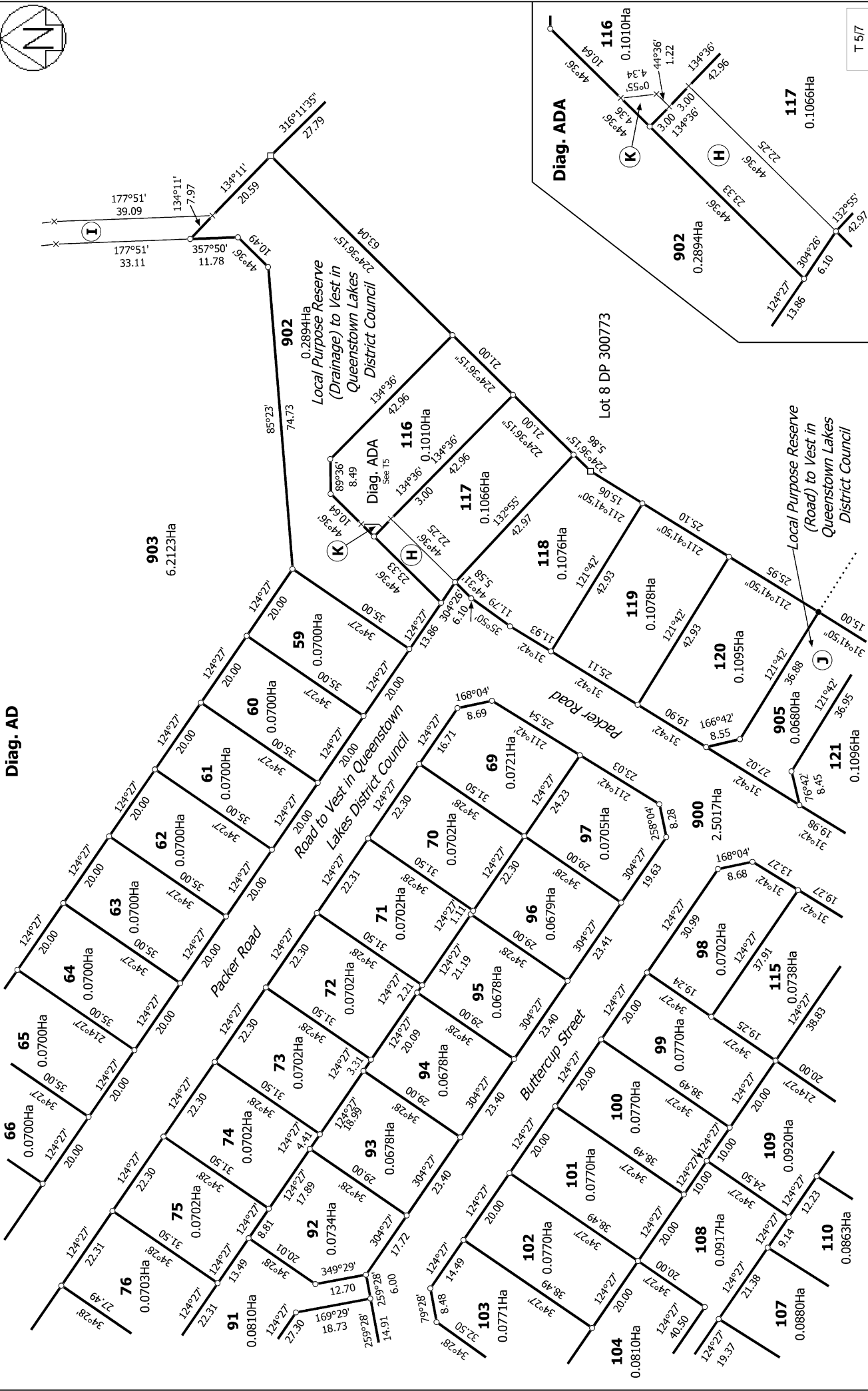


T 4/7

Land District: Otago	Surveyor: Brady James Kingan Firm: Paterson Pitts Limited Partnership (W)	Title Plan LT 608359 Approved on: 3/03/2025
Lots 31-43, 59-138 and 900-905 being a subdivision of Lot 999 DP 535926 Digitally Generated Plan Generated on: 03/03/2025 5:31pm Page 10 of 13		



Diag. AD



<p>Land District: Otago</p> <p>Digitally Generated Plan</p> <p>Generated on: 03/03/2025 5:31pm Page 11 of 13</p>	<p>Lots 31-43, 59-138 and 900-905 being a subdivision of Lot 999 DP 535926</p>	<p>Surveyor: Brady James Kingan</p> <p>Firm: Paterson Pitts Limited Partnership (M)</p>	<p>Title Plan</p> <p>LT 608359</p> <p>Approved on: 3/03/2025</p>
---	---	---	---

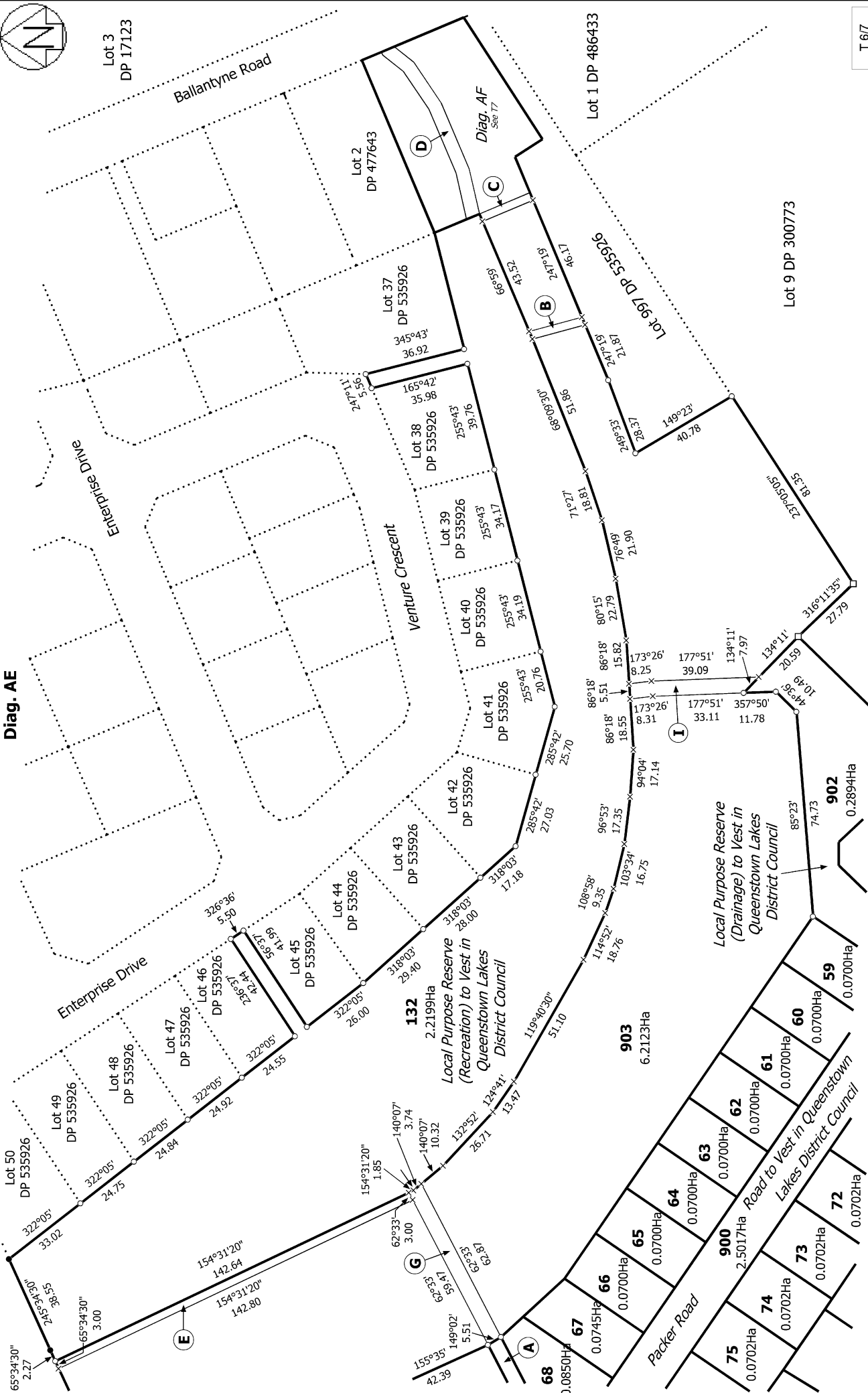
T 5/7



Lot 3
DP 17123

Ballantyne Road

Diag. AE



T 6/7

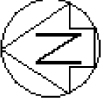
Land District: Otago

Digitally Generated Plan

Generated on: 03/03/2025 5:31pm Page 12 of 13

Surveyor: Brady James Kingan
Firm: Paterson Pitts Limited Partnership (W)

Title Plan
LT 608359
Approved on: 3/03/2025



Diag. AF

Venture Crescent

Lot 2 DP 477643

Lot 37 DP 535926

Lot 38 DP 535926

903
6.2123Ha

132
2.2199Ha
Local Purpose Reserve
(Recreation) to Vest in
Queenstown Lakes
District Council

Lot 1 DP 486433

Lot 997 DP 535926

T 7/7

Land District: Otago

Digitally Generated Plan

Generated on: 03/03/2025 5:31pm Page 13 of 13

Lots 31-43, 59-138 and 900-905 being a subdivision of Lot 999 DP 535926

Surveyor: Brady James Kingan
Firm: Paterson Pitts Limited Partnership (W)

Title Plan
LT 608359
Approved on: 3/03/2025